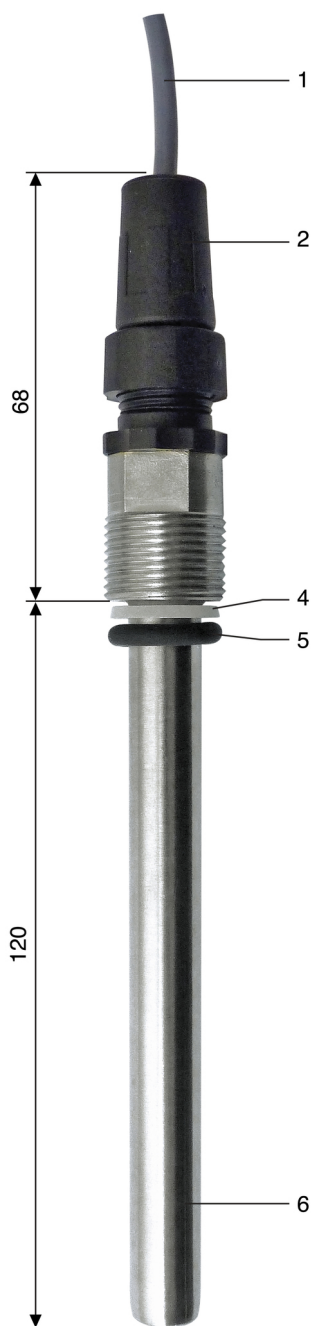


Temperature compensation probe 9094 probe



9094

- For mounting on holders 9200, 9500 et 9346
- Sensor Pt 100 Ω at 0 °C
- Versions: Simplex or Duplex
- Fitting PG 13.5

APPLICATION

9090 probes with sensor Pt 100 Ω are designed for temperature measurement in the range -20 et +150 °C for pH monitoring systems.

Built-in sensor is a Pt resistor, 100 Ω at 0 °C; probe is or simplex or duplex construction.

Probes 9090 are in conformity with standard DIN 43760.

They are used in particular on pH monitoring systems for automatic compensation of temperature.

DESCRIPTION

The sensor is a Pt100 resistor, built-in a stem.

The stem is mounted on holder with its own fitting PG 13.5 or with an additional pressure gland \varnothing 12 mm (not provided).

Connection: specific connector with a low contact resistance.

The connector is molded on the cable to protect wires against humidity.

Connector is for shielded cable, 3 or 6 wires (0,22 mm²).

9094 probe: (1)= Shielded cable; (2)= Connector; (3)= PG 13.5; (4)= Nylon seal; (5)= O-ring seal; (6)= Stem \varnothing 12 mm

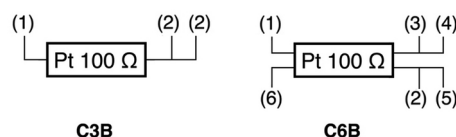
TEMPERATURE LIMITS

PVC 0 ... +45 °C

PVDF -20 ... +140 °C

Stainless steel -20 ... +150 °C

ELECTRICAL CONNECTION



(1)= White; (2)= Red; (3)= Yellow, (4)= Blue;
(5)= Black, (6)= Green

CODE NUMBERS AND REFERENCES

Code	Reference	Description
150 903	9093	Temperature probe in PVDF - L = 120 mm
150 904	9094	Temperature probe in AISI 316 L - L = 120 mm
150 906	C3B/10/CO	Connector with C3B cable, 10 m long
150 907	C3B/20/CO	Connector with C3B cable, 20 m long
150 908	C6B/10/CO	Connector (Duplex) with C6B cable, 10 m long
150 912	C6B/20/CO	Connector (Duplex) with C6B cable, 20 m long
150 917	9096	Temperature probe in PVC, L= 120 mm - Duplex
150 918	9097	Temperature probe in PVDF, L= 120 mm - Duplex

BAMO INTERNATIONAL

22, Rue de la Voie des Bans · Z.I. de la gare · 95100 ARGENTEUIL

Tel +33 (0)1 30 25 83 20 Web www.bamo.eu

Fax +33 (0)1 34 10 16 05 E-mail export@bamo.fr

Temperature compensation
probe
9094 probe

10-03-2017

D-150.02-EN-AB

pH

150-02/1