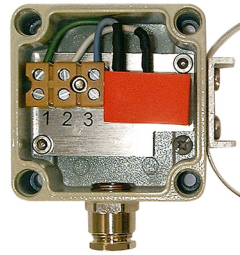
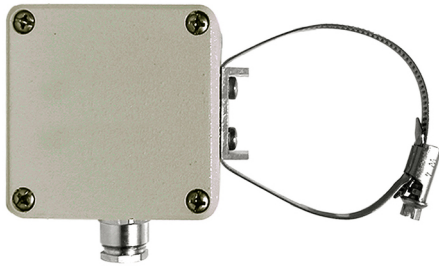


Bi-stable level switch, high temperature BRT 60



SAFETY INSTRUCTIONS

- Installation, commissioning and maintenance must be carried out by qualified technicians.
- Only connect the device to the voltage specified in the technical features and label.
- Disconnect all power sources from the device during interventions or maintenance tasks.

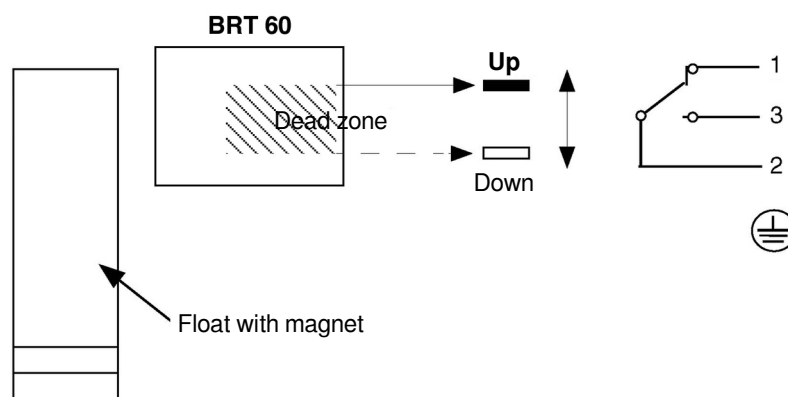
DESCRIPTION

When the float passes in front of the level switch, the contact status is changed. This change will be carried out at each passage, memorizing the relative position of the float by its bistable state. Several level detectors can be mounted on the same measuring tube; To bring them as close as possible, they must be oriented at an angle of 180°; The trigger gap will be approximately 25mm. The contact status does not change in case of a break of the electrical loop.

TECHNICAL FEATURES

Switching power:	80 VA / 12 ... 250 V AC / 1.5 A
Contact	Bi-stable, changeover
Hysteresis	About 8 to 12 mm
Protection	IP65 (DIN 400050)
Temperature limit	Liquid at Max. 200 °C
Electrical connections	Screw terminals
Cable gland	PG 7.5
Fitting	Stainless steel collar for tube Ø 63 mm
Housing	Al Si 12 (painted aluminium)
Dimensions	65 x 65 x 40 mm

WIRING



BAMO INTERNATIONAL

22, Rue de la Voie des Bans · Z.I. de la gare · 95100 ARGENTEUIL

Tel +33 (0)1 30 25 83 20 Web www.bamo.eu

Fax +33 (0)1 34 10 16 05 E-mail export@bamo.fr

Bi-stable level switch, high
temperature
BRT 60

14-03-2022

M-560.10-EN-AA

LEV

560-10/1